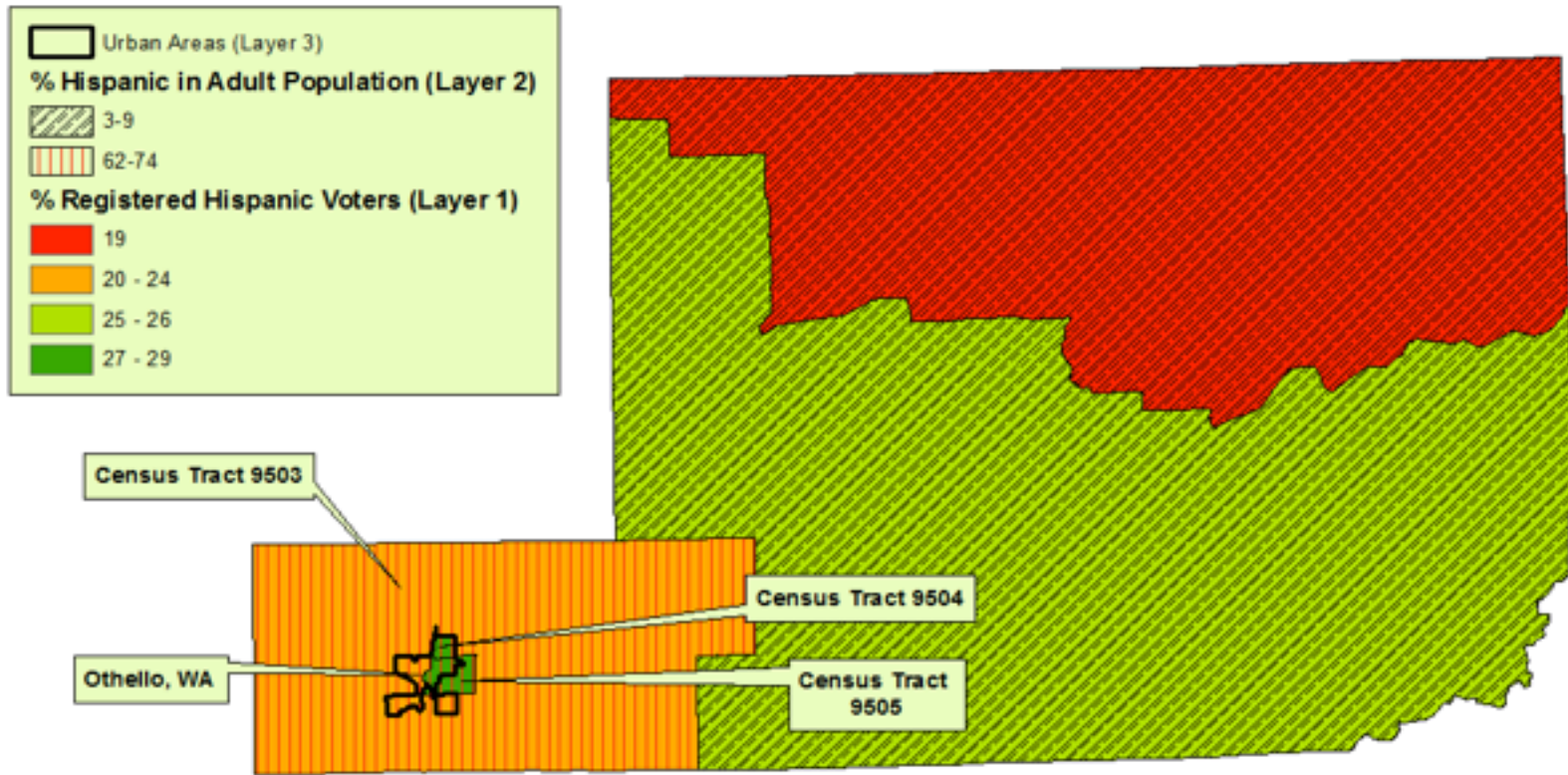


Appendix A

Figure 1: Representation of Hispanic Population on the Adams County Voter Registration List

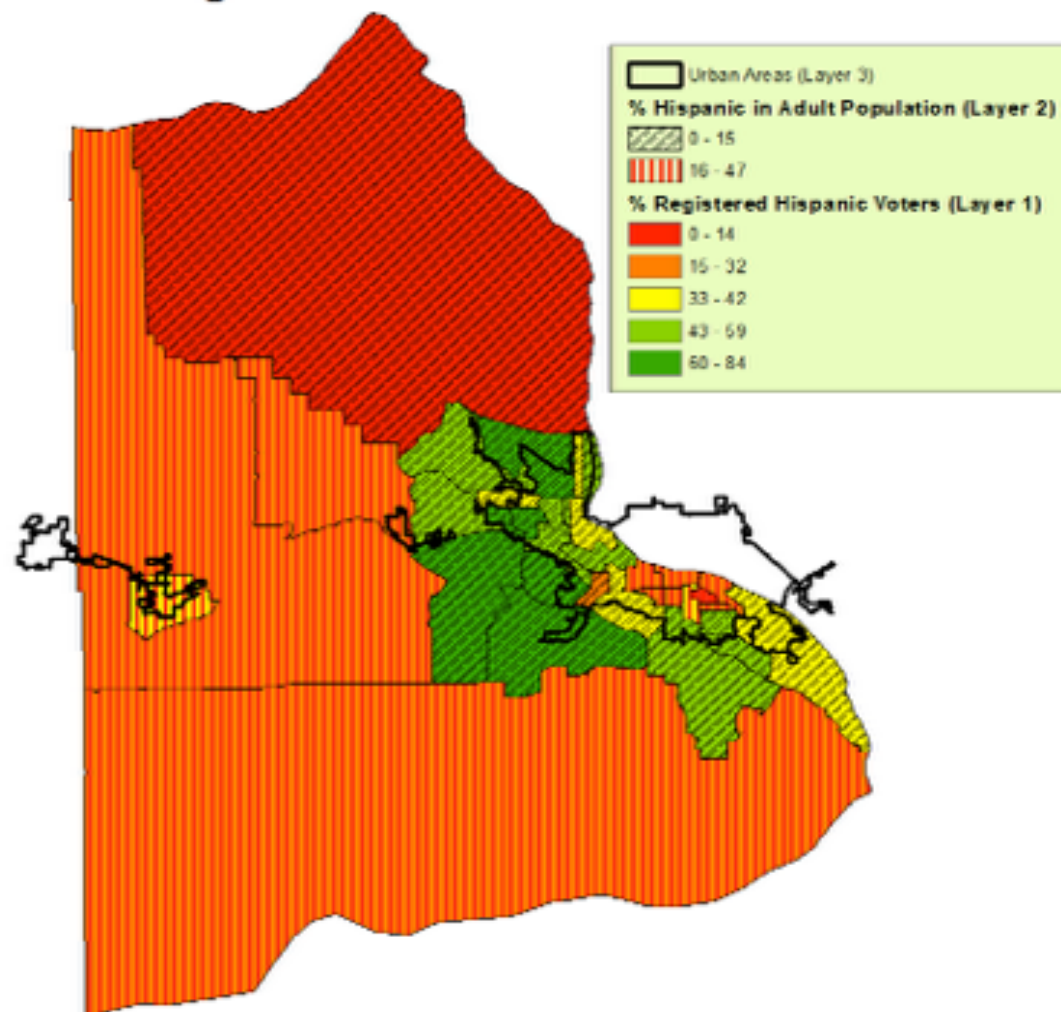
Adams County: Representation of Hispanic Population on Voter Registration List



This map, divided by Census tracts, consists of three layers: "Layer 1" shows the percent of Hispanics who are registered to vote within the Hispanic voting age population (HVAP). "Layer 2" shows the percent of Hispanics in the adult population. "Layer 3" shows the urban areas, defined by the U.S. Census.

Figure 2: Representation of Hispanic Population on the Benton County Voter Registration List

Benton County: Representation of Hispanic Population on Voter Registration List



This map, divided by Census tracts, consists of three layers: "Layer 1" shows the percent of Hispanics who are registered to vote within the Hispanic voting age population (HVAP). "Layer 2" shows the percent of Hispanics in the adult population. "Layer 3" shows the urban areas, defined by the U.S. Census.

Figure 3: Representation of Hispanic Population in Urban Areas of Benton County

Benton County: Representation of Hispanic Population on Voter Registration List

This map, divided by Census tracts, consists of three layers: "Layer 1" shows the percent of Hispanics who are registered to vote within the Hispanic voting age population (HVAP). "Layer 2" shows the percent of Hispanics in the adult population. "Layer 3" shows the urban areas, defined by the U.S. Census.

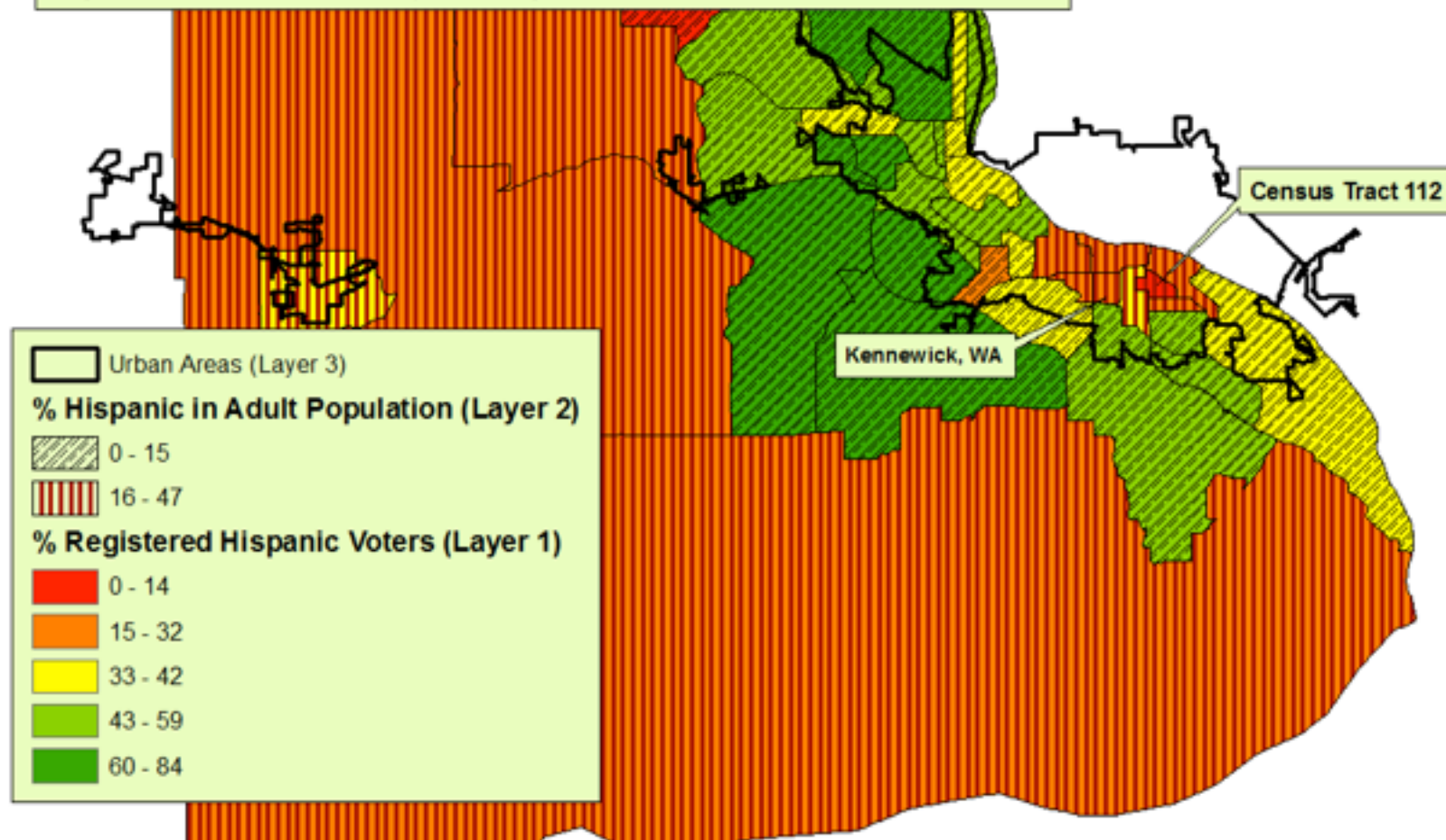


Figure 4: Representation of Hispanic Population on the Franklin County Voter Registration List

Franklin County: Representation of Hispanic Population on Voter Registration List

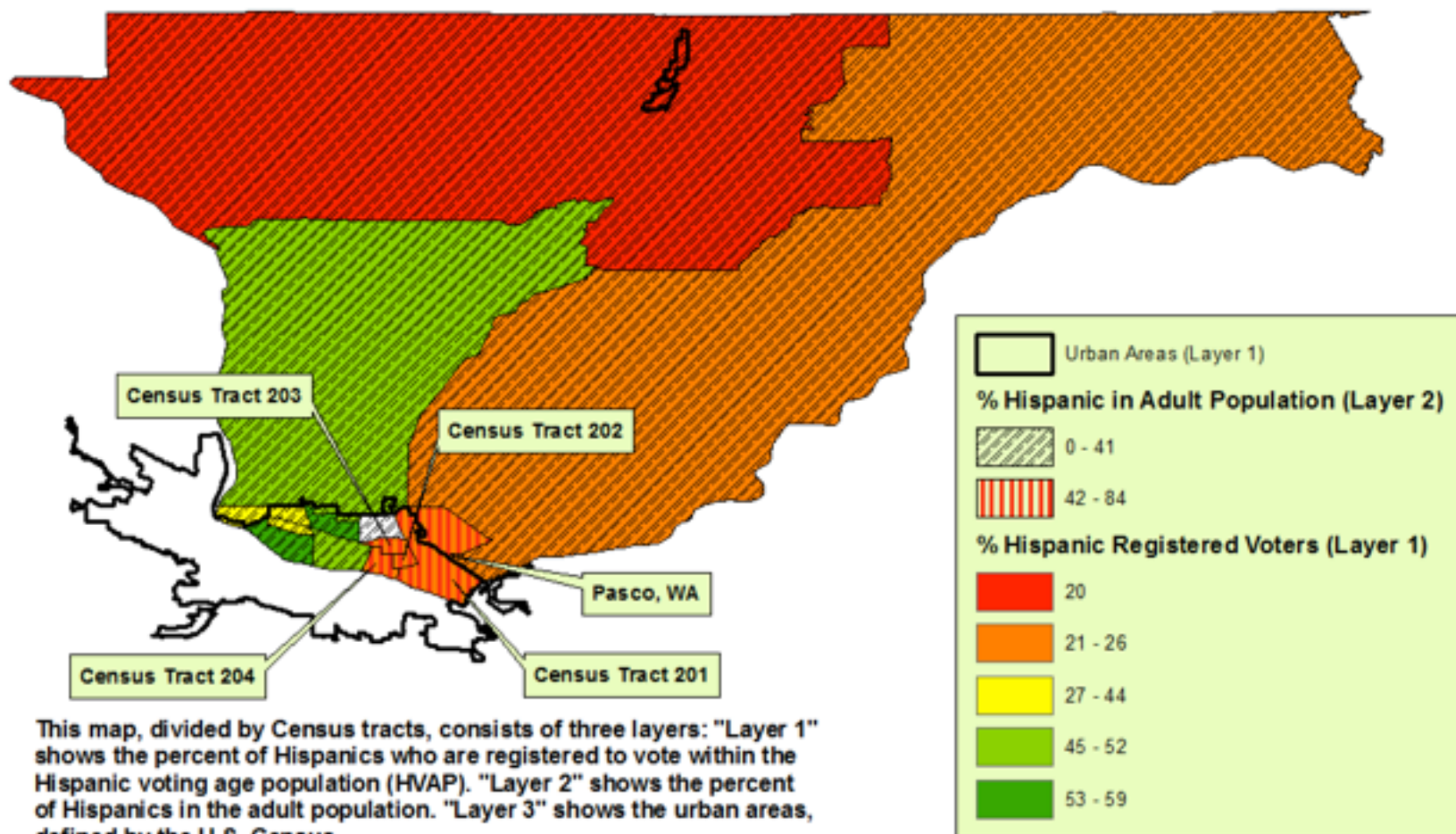


Figure 5: Representation of Hispanic Population on the Kittitas County Voter Registration List

Kittitas County: Representation of Hispanic Population on Voter Registration List

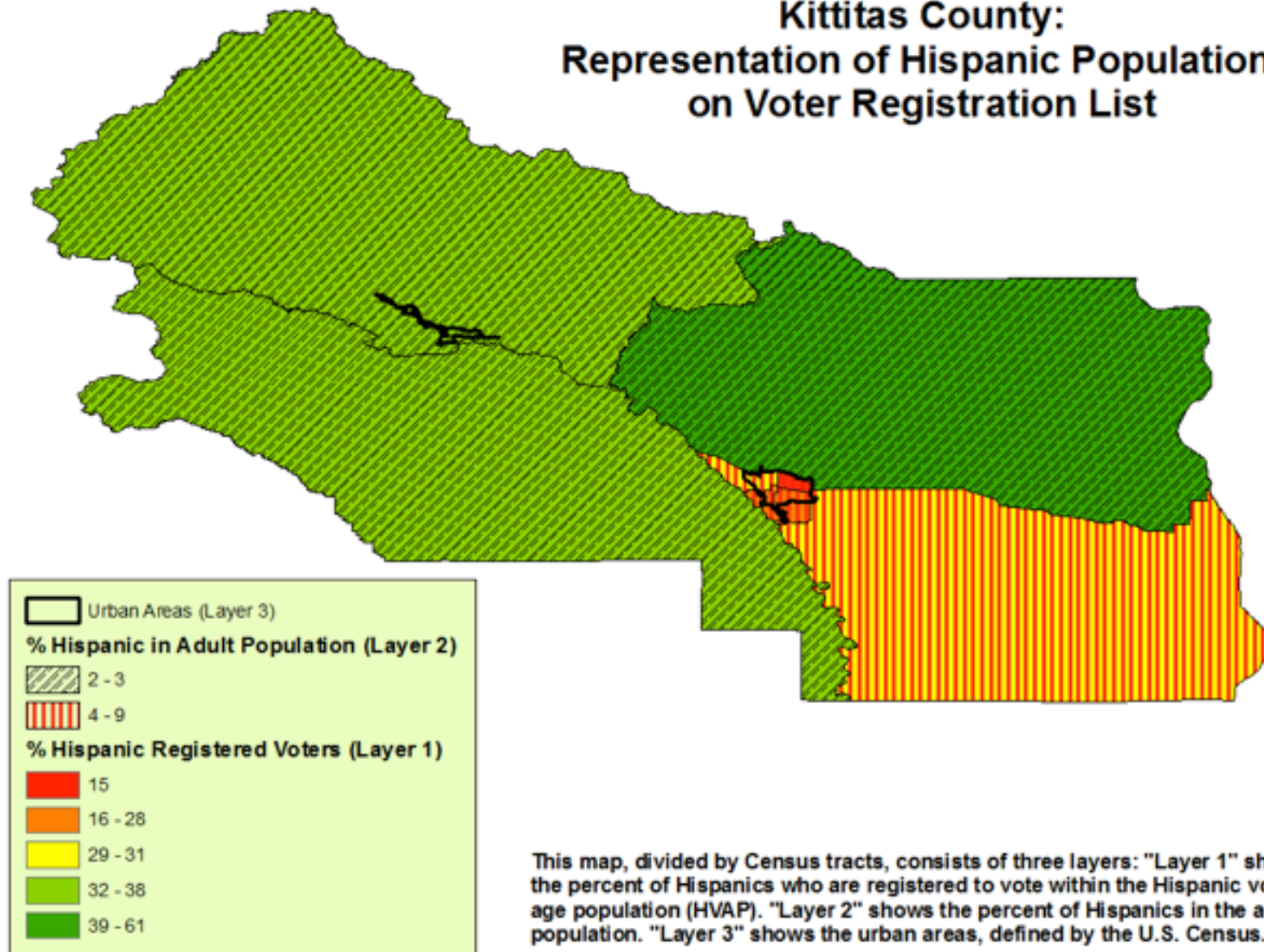


Figure 6: Representation of Hispanic Population on the Klickitat County Voter Registration List

Klickitat County: Representation of Hispanic Population on Voter Registration Lists



This map, divided by Census tracts, consists of three layers: "Layer 1" shows the percent of Hispanics who are registered to vote within the Hispanic voting age population (HVAP). "Layer 2" shows the percent of Hispanics in the adult population. "Layer 3" shows the urban areas, defined by the U.S. Census.

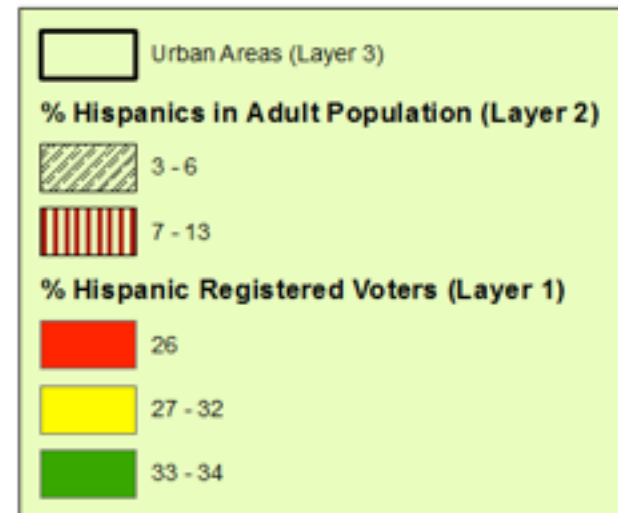
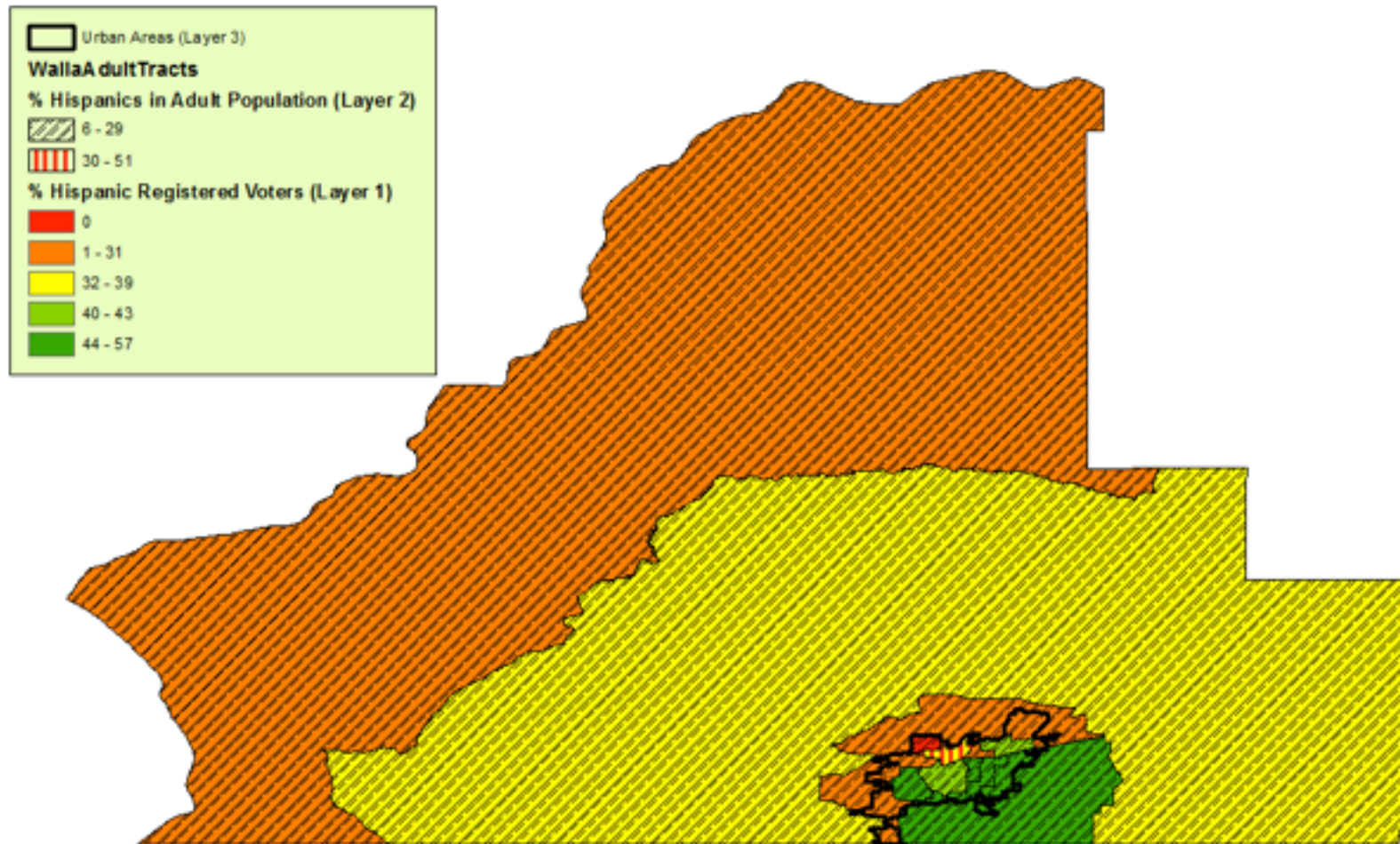


Figure 7: Representation of Hispanic Population on the Walla Walla County Voter Registration List

Walla Walla County: Representation of Hispanic Population on Voter Registration List



This map, divided by Census tracts, consists of three layers: "Layer 1" shows the percent of Hispanics who are registered to vote within the Hispanic voting age population (HVAP). "Layer 2" shows the percent of Hispanics in the adult population. "Layer 3" shows the urban areas, defined by the U.S. Census.

Figure 8: Representation of Hispanic Population in Urban Areas of Walla Walla

Walla Walla County: Representation of Hispanic Population on Voter Registration List

Urban Areas (Layer 3)

WallaAdultTracts

% Hispanics in Adult Population (Layer 2)

6 - 29

30 - 51

% Hispanic Registered Voters (Layer 1)

0

1 - 31

32 - 39

40 - 43

44 - 57

This map, divided by Census tracts, consists of three layers: "Layer 1" shows the percent of Hispanics who are registered to vote within the Hispanic voting age population (HVAP). "Layer 2" shows the percent of Hispanics in the adult population. "Layer 3" shows the urban areas, defined by the U.S. Census.

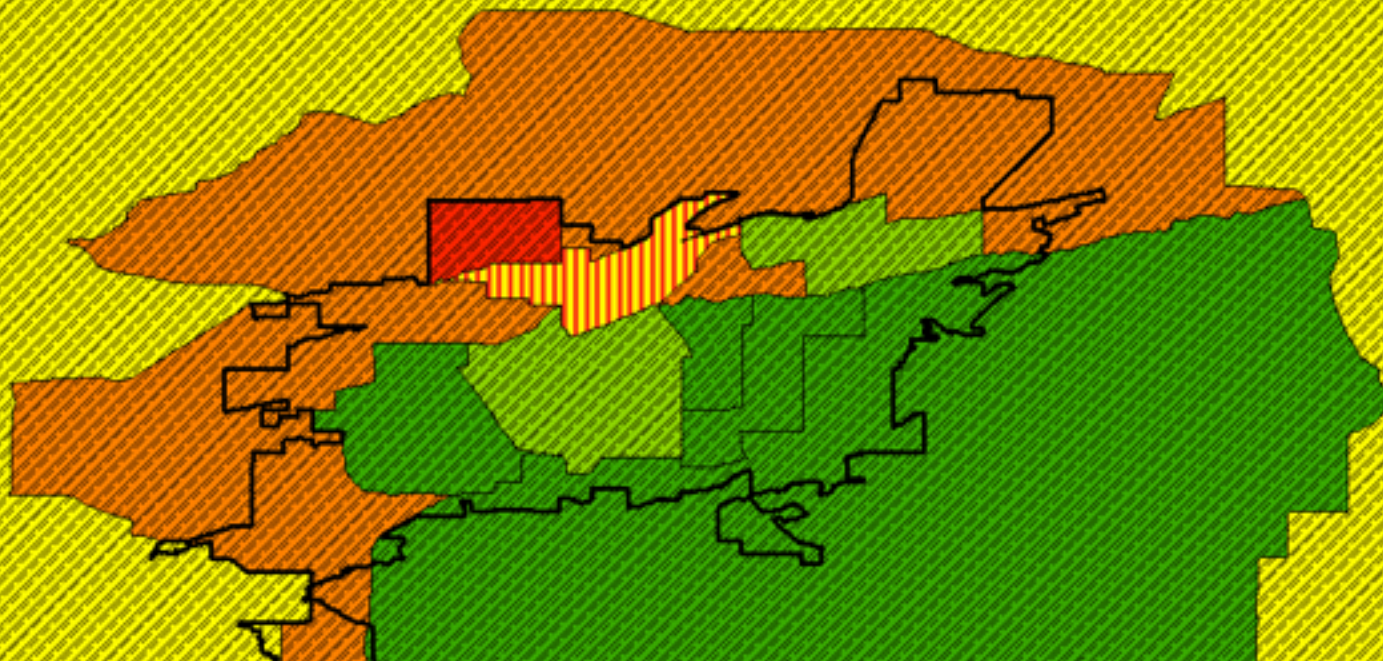


Figure 9: Representation of Hispanic Population on the Yakima County Voter Registration List

Yakima County: Representation of Hispanic Population on Voter Registration List

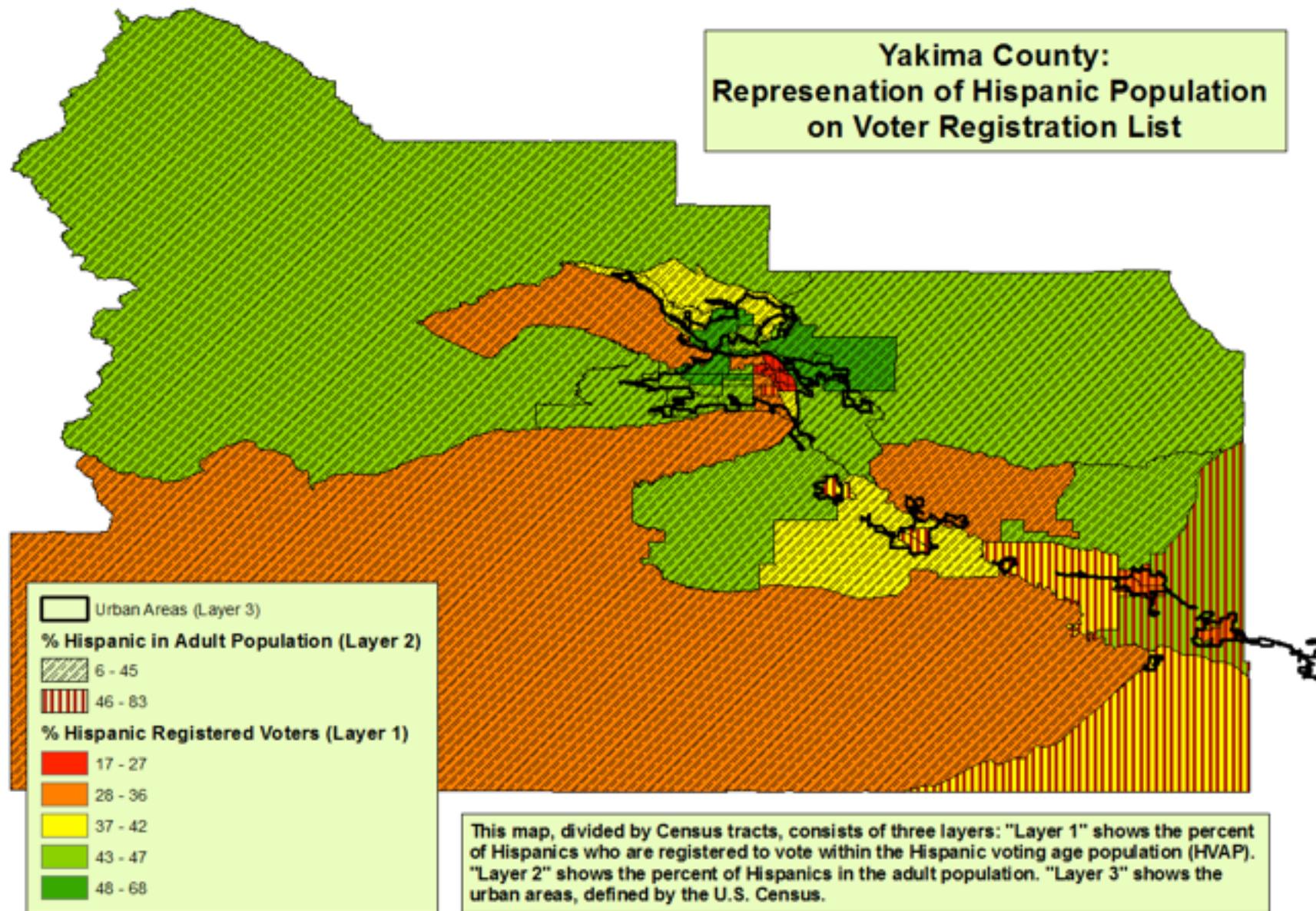
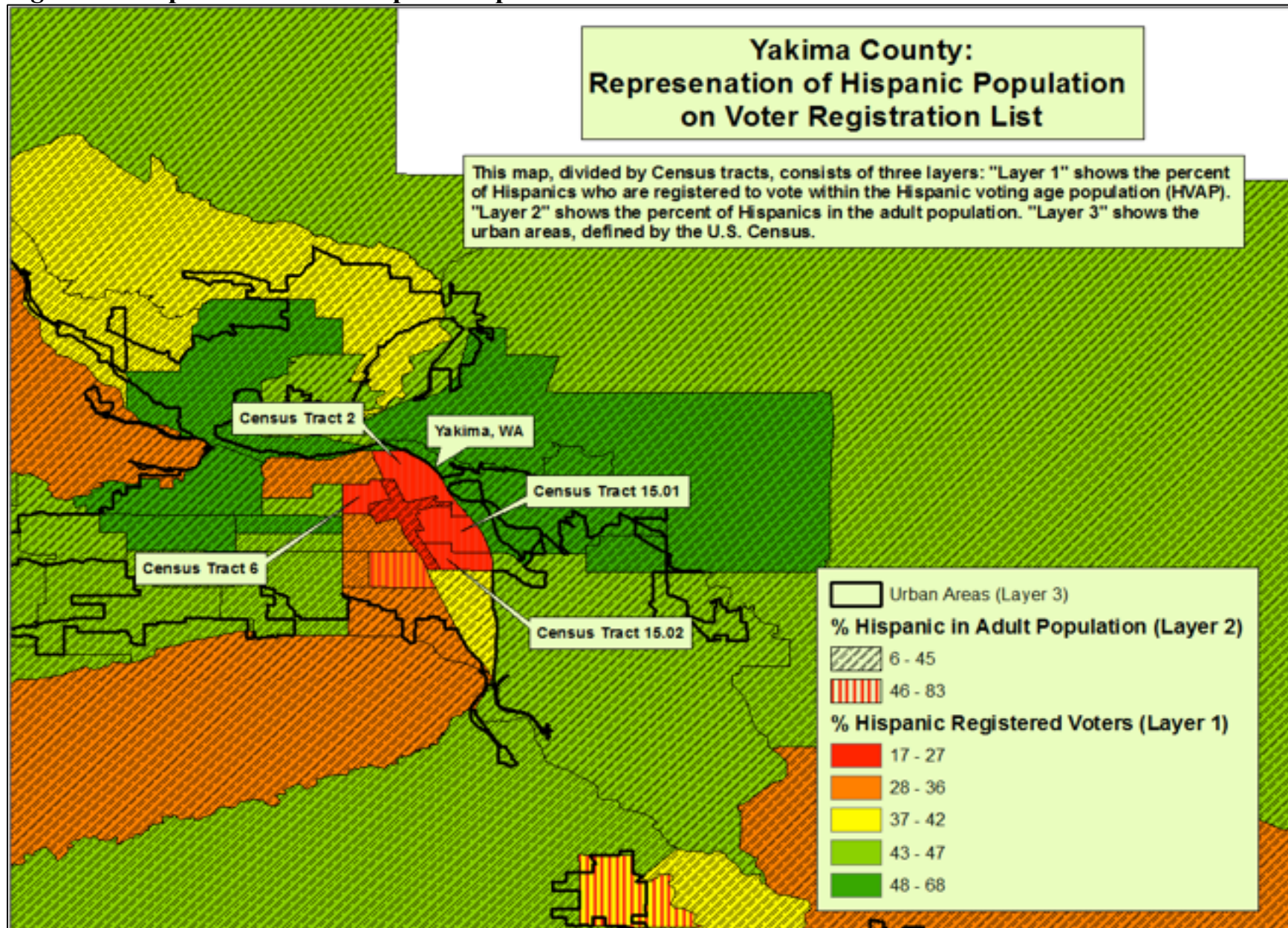


Figure 10: Representation of Hispanic Population in Urban Areas of Yakima



Appendix B

Figure 11: Representation of Hispanic Population on the Department of Licensing List

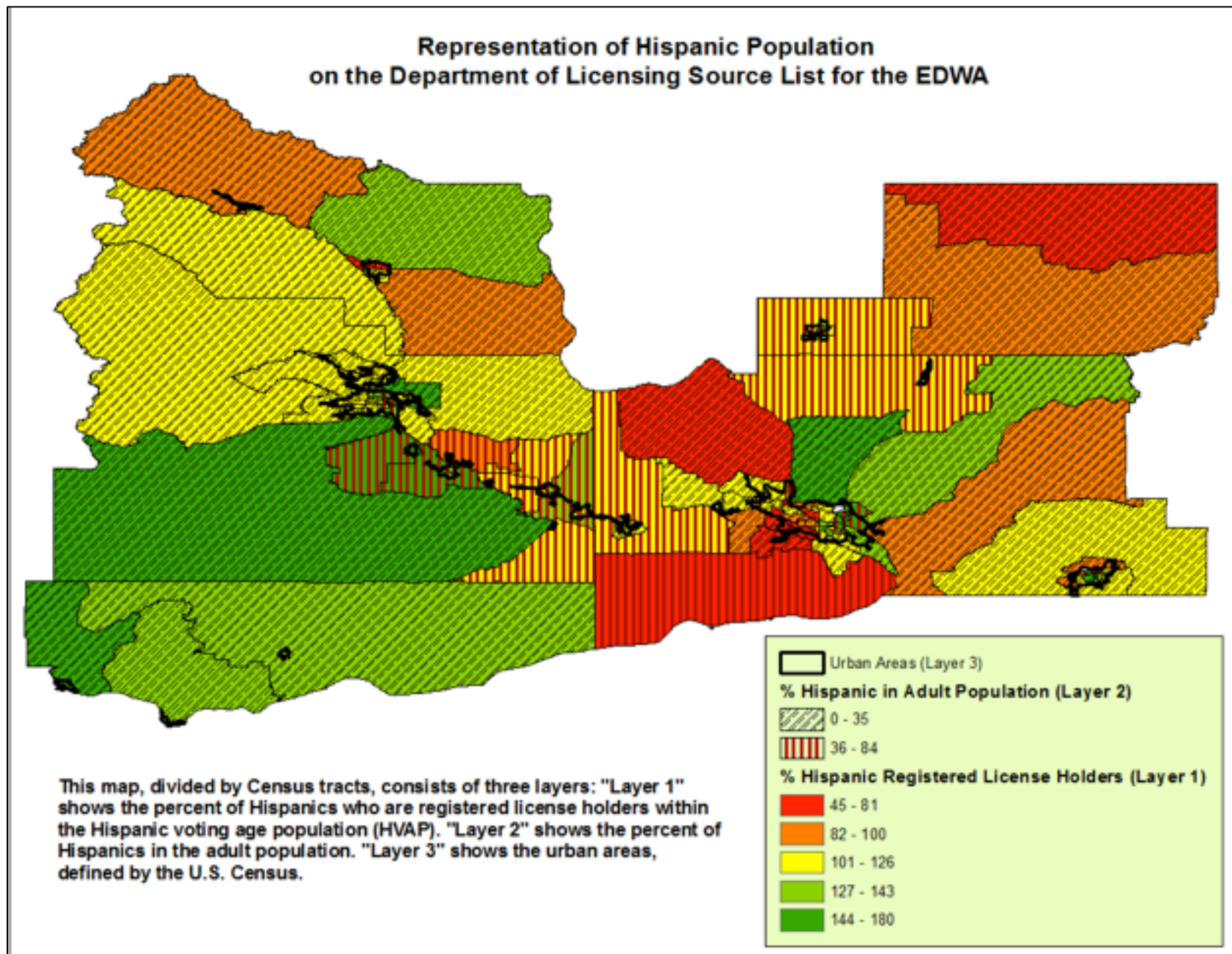


Figure 12: Representation of Hispanic Population on the Department of Licensing List in Yakima

Representation of Hispanic Population on the Department of Licensing Source in Yakima County

This map, divided by Census tracts, consists of three layers: "Layer 1" shows the percent of Hispanics who are registered license holders within the Hispanic voting age population (HVAP). "Layer 2" shows the percent of Hispanics in the adult population. "Layer 3" shows the urban areas, defined by the U.S. Census.

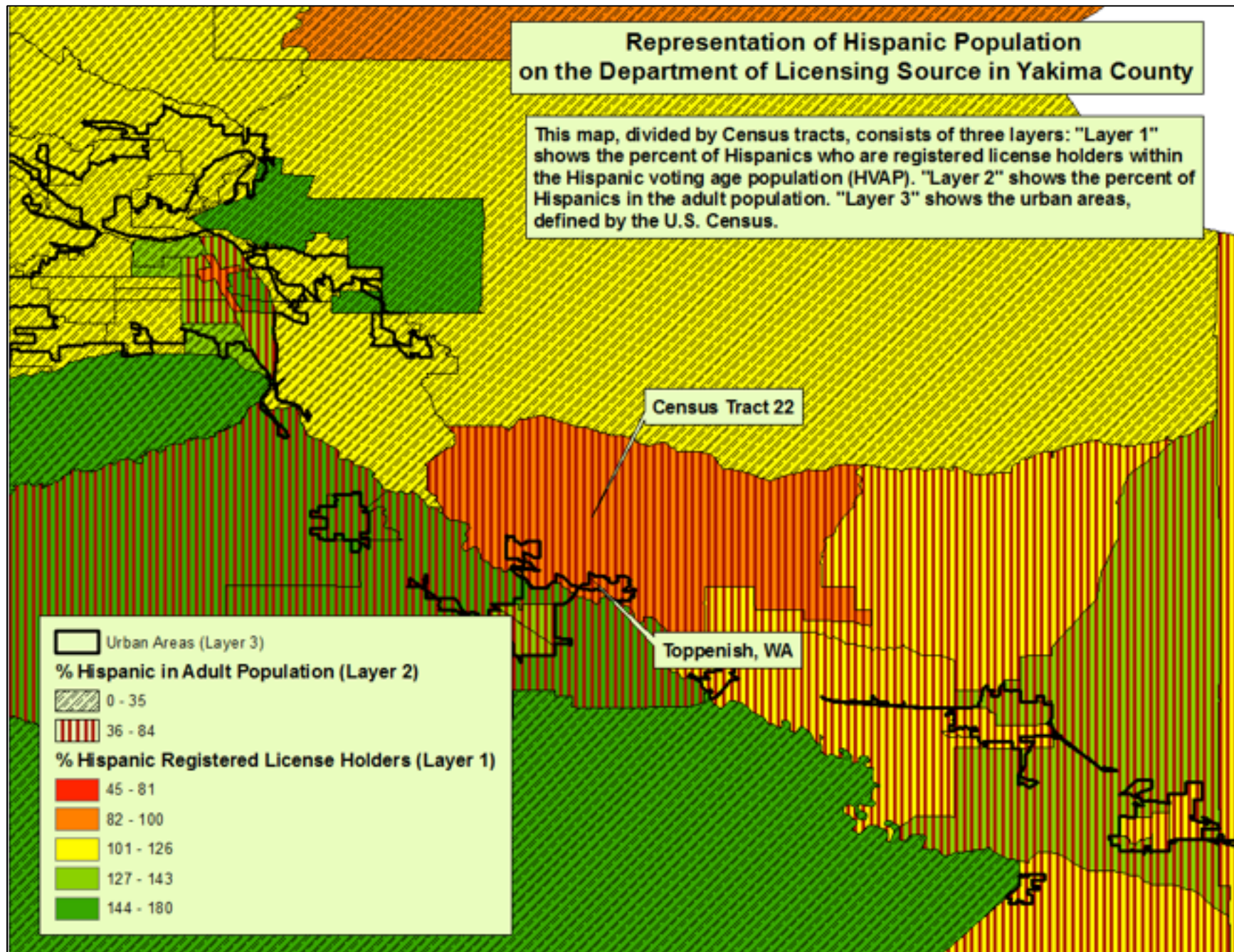
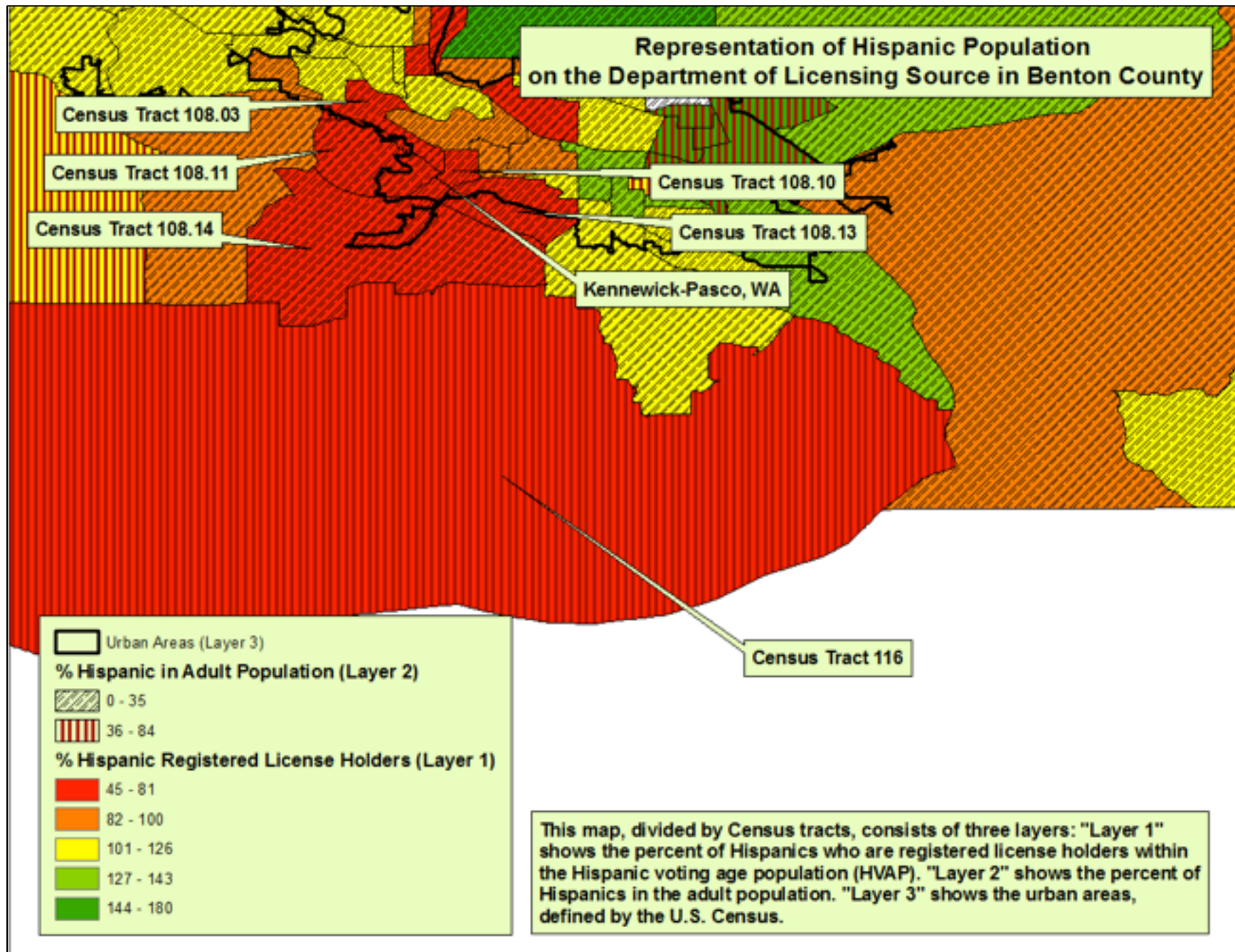


Figure 13: Representation of Hispanic Population on the Department of Licensing List in Benton County

Representation of Hispanic Population on the Department of Licensing Source in Benton County



Appendix C

Figure 14: Representation of Hispanic Population on the 2013 Merged DES “D” Source List in the EDWA

Representation of Hispanic Population on 2013 Merged DES "D" Source List

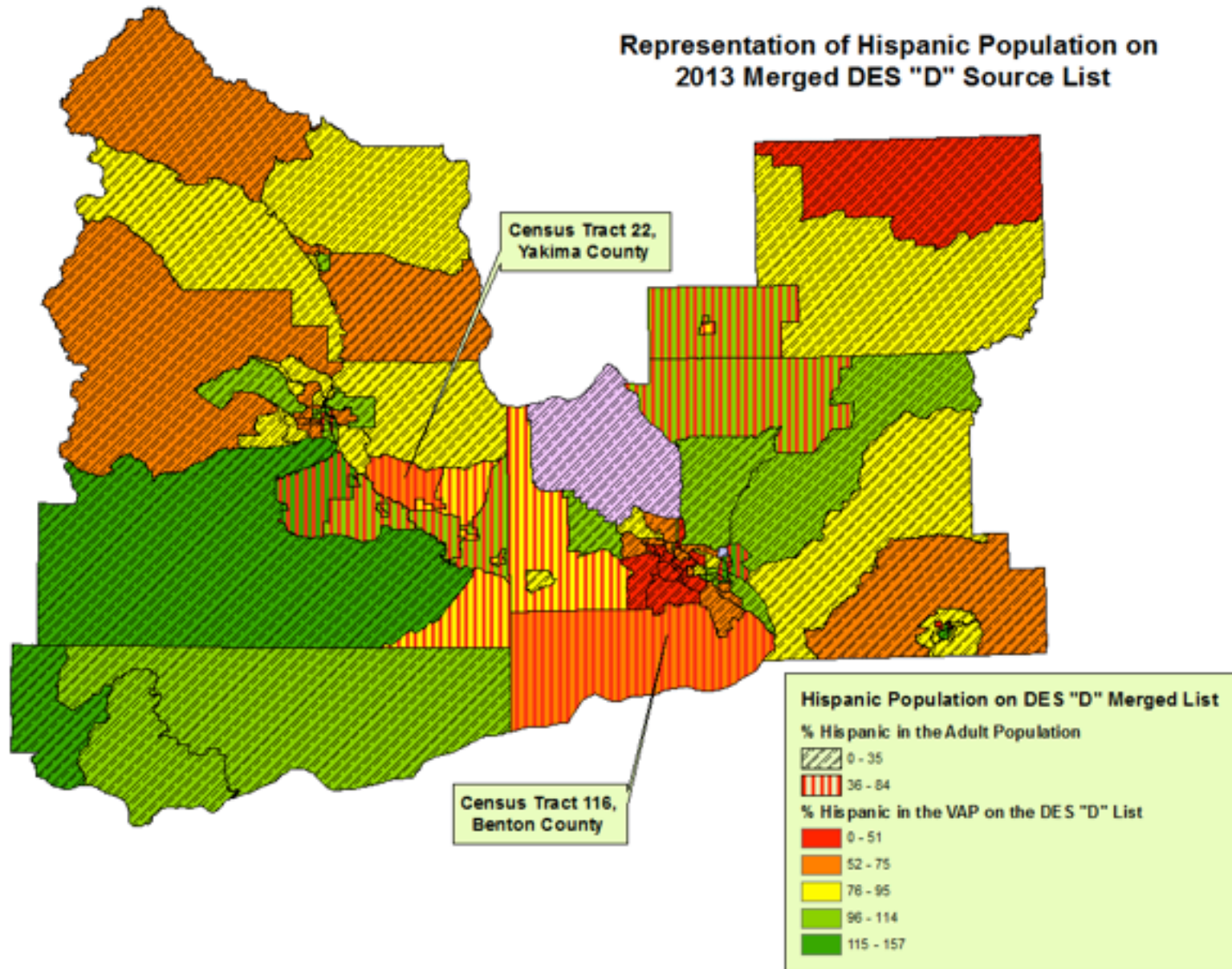
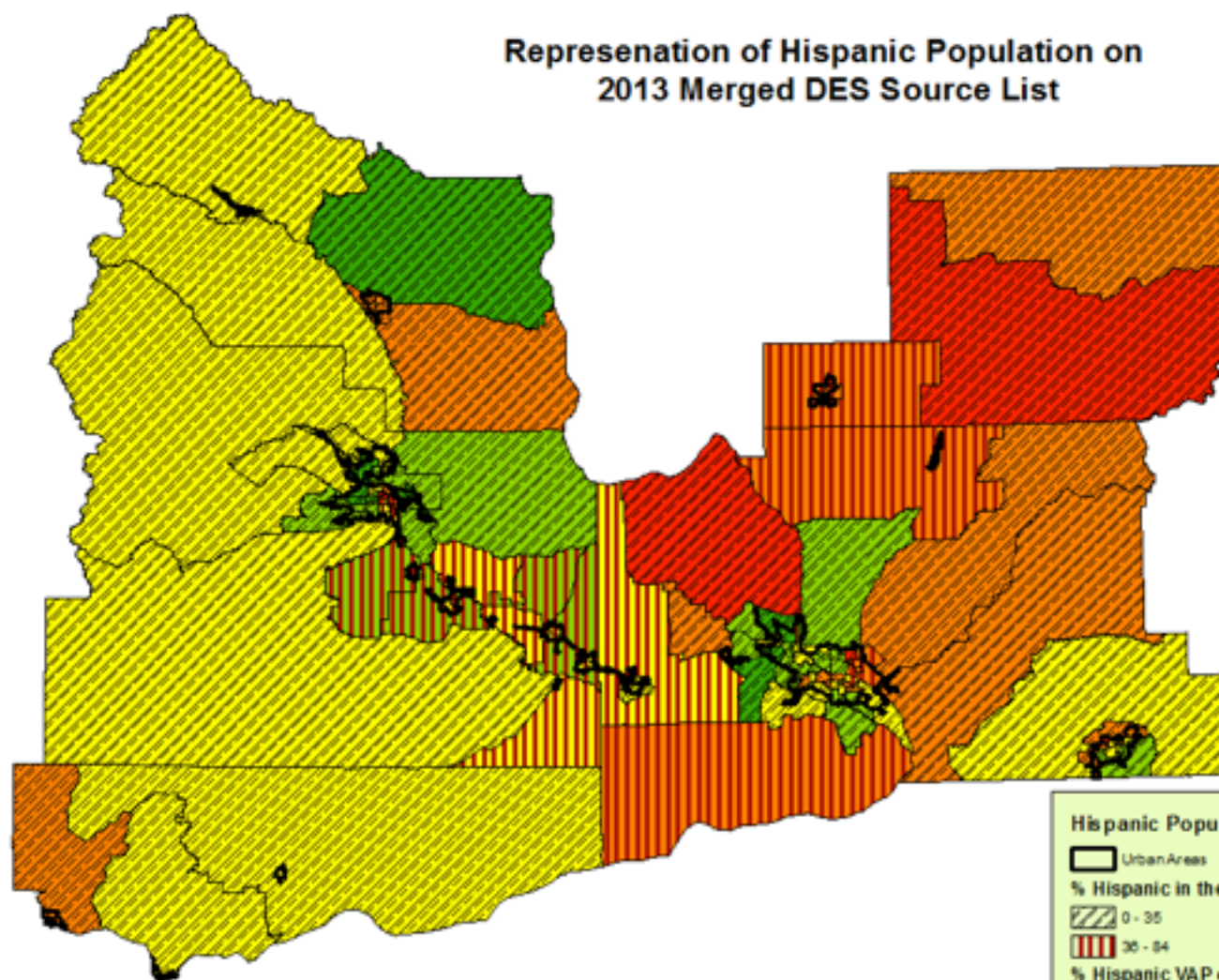


Figure 15: Representation of Hispanic Population on 2013 Merged DES “B” Source List in the EDWA

Representation of Hispanic Population on 2013 Merged DES Source List



This map, divided by Census tracts, consists of three layers: "Layer 1" shows the percent of Hispanics who are on the DES merged source list within the Hispanic voting age population (HVAP). "Layer 2" shows the percent of Hispanics in the adult population. "Layer 3" shows the urban areas, defined by the U.S. Census.

Hispanic Population on DES Merged List

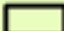


Figure 16: Representation of Hispanic Population on Merged DES “B” Source List in Franklin County


Representation of Hispanic Population on 2013 Merged DES Source List in Franklin County

This map, divided by Census tracts, consists of three layers: "Layer 1" shows the percent of Hispanics who are on the DES merged source list within the Hispanic voting age population (HVAP). "Layer 2" shows the percent of Hispanics in the adult population. "Layer 3" shows the urban areas, defined by the U.S. Census.

Hispanic Population on DES Merged List

 Urban Areas

% Hispanic in the Adult Population

 0 - 35

 36 - 84

% Hispanic VAP on the DES List

 0 - 10

 11 - 29

 30 - 39

 40 - 51

 52 - 71

Connell, WA

Census Tract 208, Franklin County

Figure 17: Representation of Hispanic Population on Merged DES “B” Source List in Yakima

Representation of Hispanic Population on 2013 Merged DES Source List in Yakima

This map, divided by Census tracts, consists of three layers: "Layer 1" shows the percent of Hispanics who are on the DES merged source list within the Hispanic voting age population (HVAP). "Layer 2" shows the percent of Hispanics in the adult population. "Layer 3" shows the urban areas, defined by the U.S. Census.

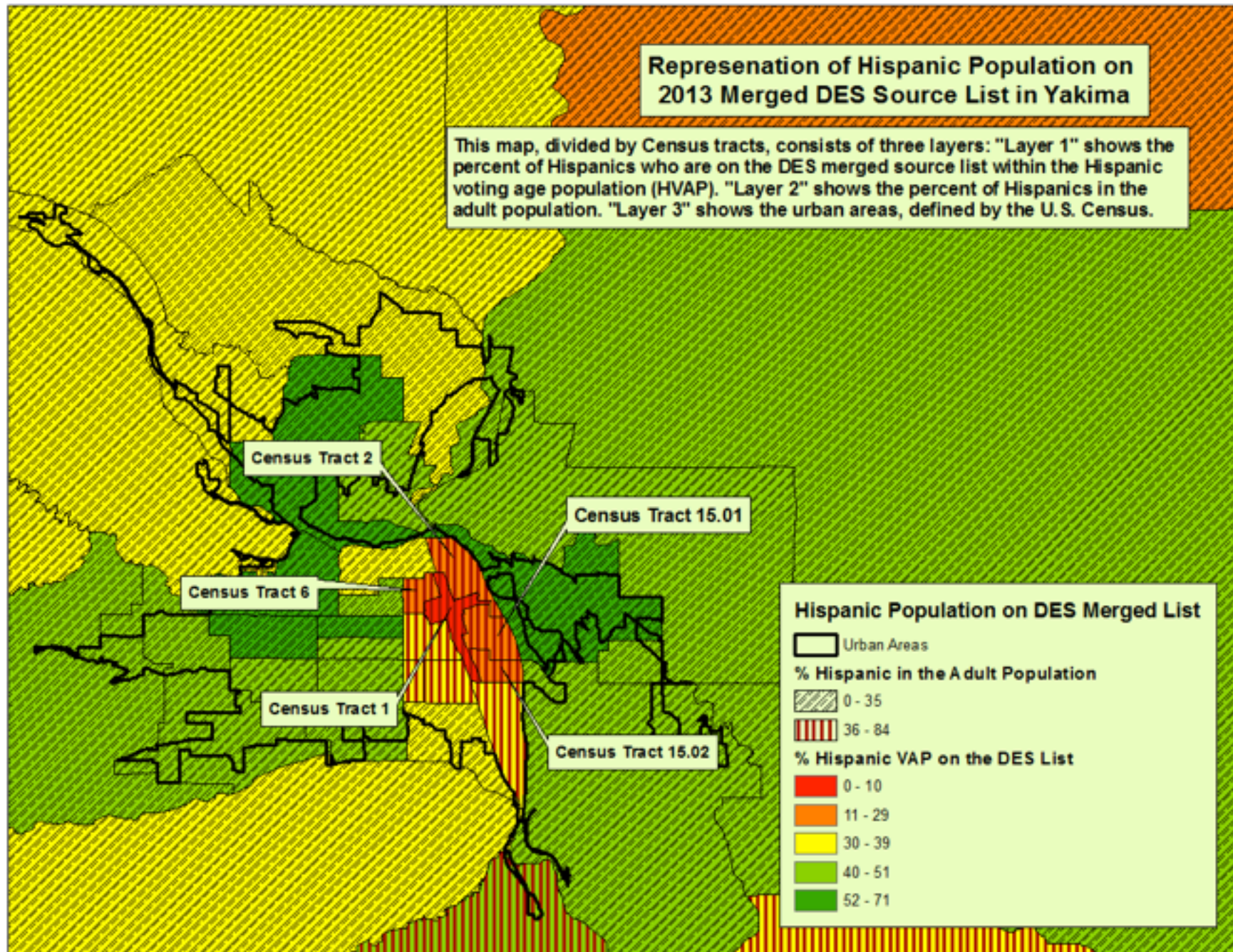


Figure 18: Representation of Hispanic Population on Merged DES Source List in Adams County

Representation of Hispanic Population on 2013 Merged DES Source List in Adams County

This map, divided by Census tracts, consists of three layers: "Layer 1" shows the percent of Hispanics who are on the DES merged source list within the Hispanic voting age population (HVAP). "Layer 2" shows the percent of Hispanics in the adult population. "Layer 3" shows the urban areas, defined by the U.S. Census.

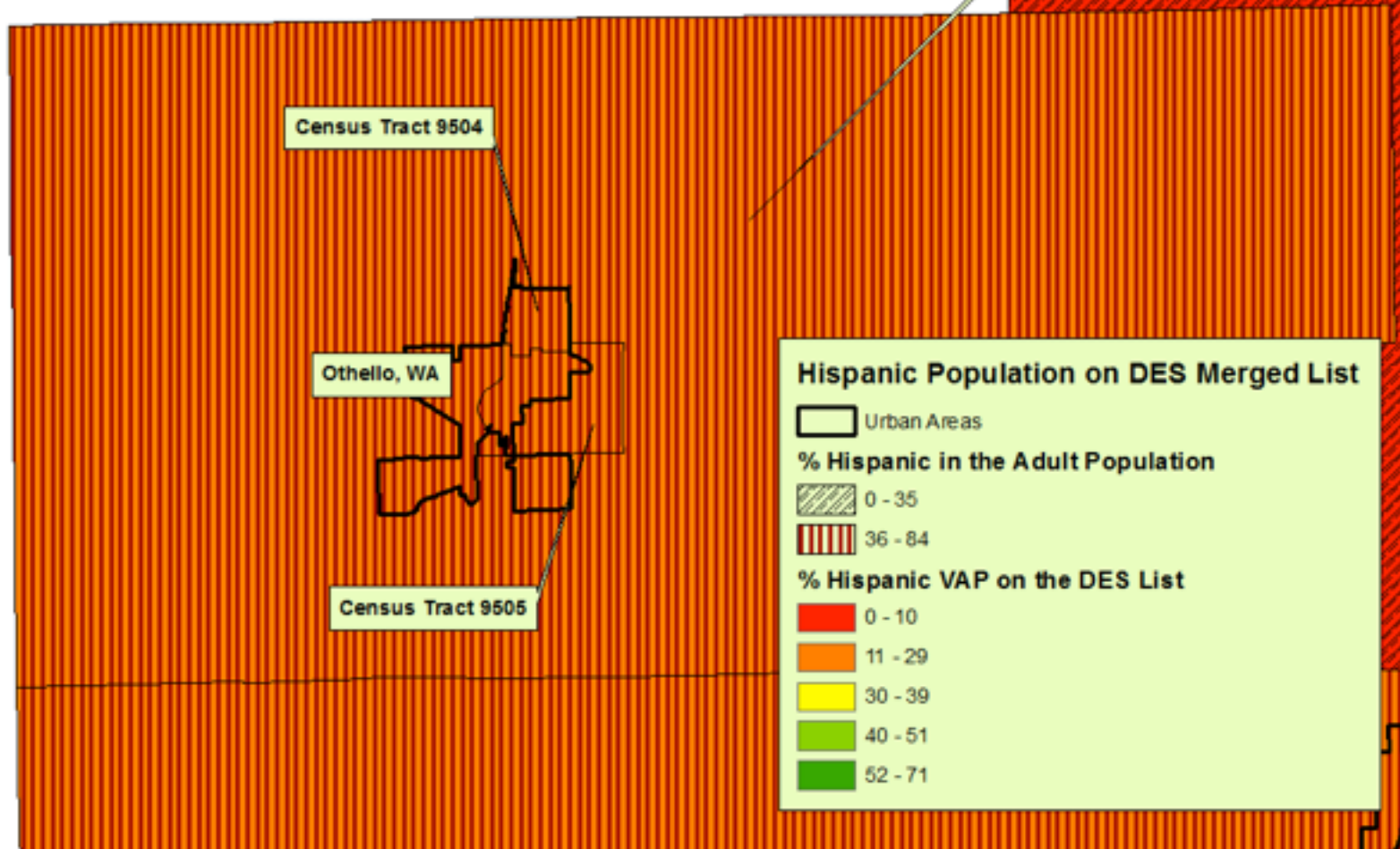
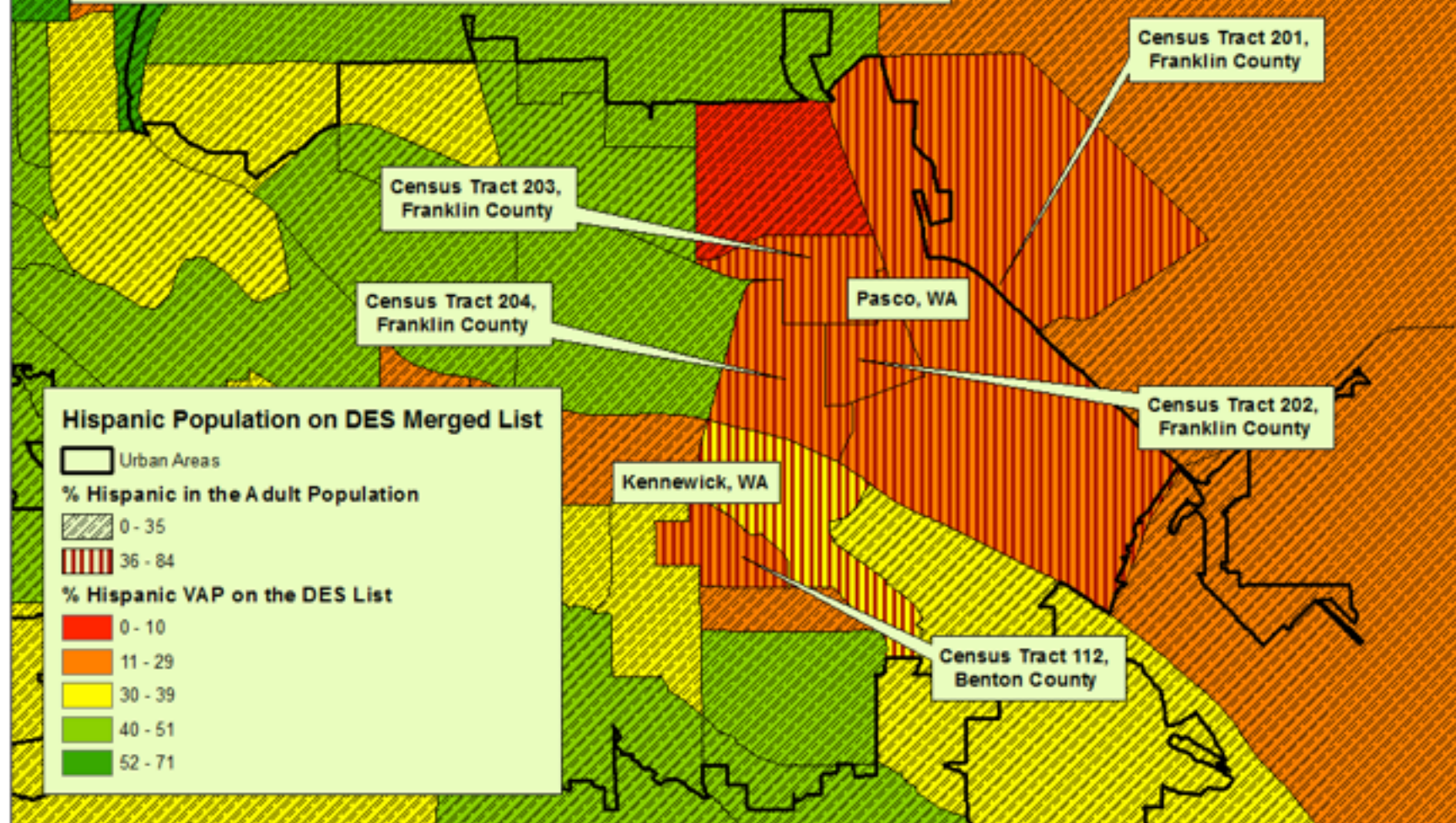


Figure 19: Representation of Hispanic Population on Merged DES Source List in Kennewick and Pasco

Representation of Hispanic Population on 2013 Merged DES Source List in Kennewick and Pasco (Benton and Franklin County)

This map, divided by Census tracts, consists of three layers: "Layer 1" shows the percent of Hispanics who are on the DES merged source list within the Hispanic voting age population (HVAP). "Layer 2" shows the percent of Hispanics in the adult population. "Layer 3" shows the urban areas, defined by the U.S. Census.



Appendix D: Focus Group Interviews

Focus Group with Non-Latino Participants, Walla Walla, Washington, December 6, 2013, Loretta Velaochaga Klugger.

Focus Group with Citizen Latino Participants, Walla Walla, Washington, December 8, 2013, Loretta Velaochaga Klugger.

Focus Group with Non-Citizen Latino Participants, Walla Walla, Washington, December 8, 2013, Loretta Velaochaga Klugger.

Appendix E: Juror Qualification Questionnaire



United States District Court

YAKIMA DIVISION
100 S. THIRD STREET
P.O. BOX 2796
YAKIMA, WA 98901

Important Directions for Marking Answers & Signing This Form

Use a No. 2 Pencil

DO NOT WRITE IN THESE SPACES

- Do not use ink or ballpoint
- Fill out form on hard surface
- Make heavy black marks that fill in the circle completely
- Erase any changes completely
- Make no stray marks
- Do not write in margins nor in official use only areas

FOR
OFFICIAL
USE

Jurors
Please Do
Not Write in
This Space

QUAL ☐
EXCUS ☐
EXEMPT ☐
DEQ ☐

100673337

TO: If your name and permanent address are not correct, please make corrections here.



Participant #
100673337

MEREDITH O BRUCH
2906 W YAKIMA AVE
YAKIMA, WA 98902-2843

Please Provide Your Phone Number(s)
Home: () - -
Work (if not residential): () - -
Area Code Number Area Code Number & Ext.
Area Code Number Area Code Number & Ext.

Right ☐
Wrong ☐

JUROR QUALIFICATION QUESTIONNAIRE

Please Read Letter on Other Side Before Completing

If another person fills out the form, please indicate that person's name, address and reason why in the "Remarks" section.

Fill in Completely Your Response to Each Question

1. Are you a citizen of the United States? Yes ☐ No ☐
2. Are you 18 years of age or older? Yes ☐ No ☐
Date of Birth: Give your age: ☐ Months ☐ Days ☐ Year ☐

3. Has your primary residence for the past year been in this state? Yes ☐ No ☐
If "No," show under remarks on reverse the names of other counties or cities of primary residence during the last year and show dates.

4. Do you read, write, speak and understand the English language? Yes ☐ No ☐

5. Are any charges now pending against you for a violation of state or federal law punishable by imprisonment for more than one year? Yes ☐ No ☐
6. Have you ever been convicted, either by your guilty or sole confession plus or by a court or jury trial, of a state or federal crime for which punishment could have been more than one year in prison? Yes ☐ No ☐
7. If "Yes," were your civil rights restored? Yes ☐ No ☐
(If "Yes," explain on the reverse side.)

8. Do you have any physical or mental disability that would interfere with or prevent you from serving as a juror? (If "Yes," please see notes to Question 8 on reverse side.) Yes ☐ No ☐

9. EXEMPTIONS
Are you employed in a full time basis as a Public official of the United States, state, or local government who is elected to public office or directly appointed by one elected to office? Yes ☐ No ☐

- Member of any governmental police or regular fire department (not including volunteer or non-governmental departments)? Yes ☐ No ☐

- Member in active service of the armed forces of the United States? Yes ☐ No ☐

10. RACE/ETHNICITY
a. To assist in ensuring that all people are represented on juries, please fill in completely one or more circles which describe you. (See notes on reverse side.)
Nothing declared will affect your selection for jury service.
☐ Black/African American ☐ Asian ☐ American Indian/Alaska Native
☐ White ☐ Native Hawaiian/Pacific Islander
b. Other (print): ☐ Male ☐ Female

11. Are you Hispanic or Latino? Yes ☐ No ☐

12. MARITAL STATUS: ☐ Single ☐ Married ☐ Widowed ☐ Separated or Divorced

13. I declare under penalty of perjury that the answers are true to the best of my knowledge and belief.

SGN DATE

If your address changes after you have returned the questionnaire, please notify the Court promptly by letter or post card, addressing it to "Attention: Jury Administration."

11. OCCUPATION (See reverse side)
Are you now employed? Yes ☐ No ☐
Are you a salaried employee of the U.S. gov't? Yes ☐ No ☐
Your Usual Occupation, Trade, or Business:
Your Employer's Name:
Business or Employer's Address:

14. Grounds for Requesting Excuse
(See Notes to Question 14 on other side)
This section describes certain categories of persons who may be excused from service as a juror. If you are a person in one of these categories and you wish to be excused, fill in completely the circle for the number of your category here.

Or, if you wish to serve, do not show anything here.

- 1) A person who has served as a grand or petit juror in federal court within the last 2 years (give name of court and dates you served in Remarks section or on-line box).
- 2) A person who serves without compensation as a volunteer firefighter or member of a rescue squad/ambulance crew for a federal, state, or local government agency (describe your service and the agency for which you work in Remarks section or on-line box).
- 3) If you believe you should be excused from jury service because jury service would cause undue hardship or extreme inconvenience or because your service would have a negative impact on the public, please explain fully in Remarks section or on-line box.

Important Information re: Excuse Requests

The right of citizens to a jury trial is guaranteed by the federal constitution and service as a juror, when called, is a fundamental duty of citizenship. Accordingly, the Court is required to carefully scrutinize any request to be excused from jury service.



FOR OFFICIAL USE